

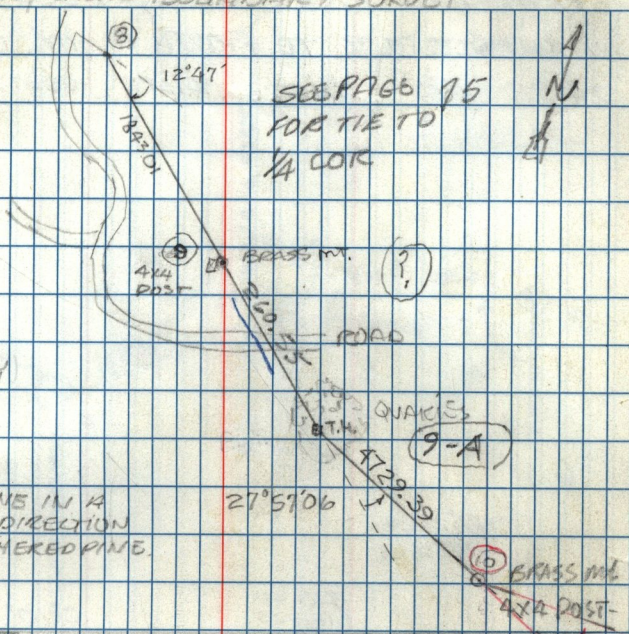
1729.39

MC 45-

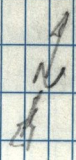
28 AUG 79
J. CARVER &
D. DURRANT & A. FRICKER

34

WEBER / CACHE BOUNDARY SURVEY



SEE PAGE 15
FOR TIE TO
1/4 COR



33.8.5 ATTY
1.7

PL'S 10-17
TRAVERSE LINE IN A
NORTHLY DIRECTION
THROUGH BURNED PINE
& QUAKES.

27°51'06"

1843.01
260.55
 2103.56

ROCKY PIN SOUTH OF DRY STREAM BED.

ACROSS DOLL FLAT RD. CROSSES BOUNDARY LINE.

CONTINUED MC 45-A P. 25